

PGY1 Managed Care Pharmacy Residency – Advocate Health Midwest Region

❖ Melinda Sharp, PharmD, BCPS – Residency Program Director



Managed Care Pharmacist II

Pharmacy School: Creighton University

Additional Training: PGY1 Residency at OSF Saint Francis Medical Center, Peoria IL

Practice Areas and Specialties: Managed Care

Previous Practice Areas and Positions: Medical and Surgical Intermediate Lead Clinical Pharmacist at OSF Saint Francis Medical Center, Infectious Disease/Antimicrobial Stewardship Float Pharmacist at OSF Saint Francis Medical Center

Precepts: Orientation/Training

Involvement in Other Residency Programs: PGY1/2 HSPAL preceptor

❖ Meaghan McMurray, PharmD, BCPS



Area Vice President Population Health and Ambulatory Pharmacy

Pharmacy School: University of Wisconsin – Madison

Practice Areas and Specialties: Ambulatory, Population Health, Leadership

Previous Practice Areas and Positions: Aurora Retail Pharmacy Manager, Population Health Clinical Pharmacy Coordinator, Population Health Pharmacy Manager, Population Health Pharmacy Director

Precepts: Pharmacy Administration

Involvement in Other Residency Programs: PGY1/2 HSPAL preceptor

❖ Mayuri Shah, PharmD, CSP



Managed Care Pharmacist II

Pharmacy School: University of Illinois at Chicago (UIC)

Practice Areas and Specialties: Managed Care

Previous Practice Areas and Positions: Retail Pharmacy Manager at Walgreens

Precepts: Medical Benefit Utilization Management, Continuing Pharmacy Education (CPE) Presentation

❖ Erica Conley, PharmD, BCPS



Population Health Pharmacy Coordinator

Pharmacy School: University of Wisconsin – Madison

Additional Training: PGY1 Residency at Aurora Health Care Metro Inc

Practice Areas and Specialties: Population Health

Precepts: Chronic Disease and Medication Therapy Management

❖ **Mary Pubentz, PharmD, MA**



Manager of Pharmacy, Population Health

Pharmacy School: University of Illinois at Chicago (UIC)

Additional Training: PGY1 Residency at Advocate Lutheran General Hospital

Practice Areas and Specialties: Managed Care, Population Health, Clinically Integrated Networks

Previous Practice Areas and Positions: Ambulatory Care

Precepts: Pharmacy Administration

❖ **Stacy Bolognini, PharmD, BCPS**



Managed Care Pharmacist I

Pharmacy School: Midwestern University

Additional Training: PGY1 Residency at Aurora St. Luke's Medical Center

Practice Areas and Specialties: Managed Care, Medication Safety/High Reliability

Previous Practice Areas and Positions: Inpatient Pharmacist at Advocate Condell Medical Center, Residency Program Director at Advocate Condell Medical Center

Precepts: Medical Benefit Pharmacy Utilization Management

❖ **Caitlin Vail, PharmD, BCACP**



Pharmacy Coordinator, Managed Care Pharmacy Team

Pharmacy School: University of Illinois at Chicago (UIC)

Additional Training: PGY1 Residency at Wm. S. Middleton VA Hospital (focus in ambulatory care), Concordia University Wisconsin MBA focus in Healthcare Administration (expected completion 2027)

Practice Areas and Specialties: Managed Care, Ambulatory Care

Previous Practice Areas and Positions: Clinical Pharmacist II and Anticoagulation Center Pharmacist at Advocate Condell Medical Center

Precepts: Pharmacy Services, Year Long Project (YLP)

❖ **Seema Patel, PharmD, BCOP**



Managed Care Pharmacist I

Pharmacy School: University of Illinois at Chicago (UIC)

Additional Training: PGY1 Residency at University of Illinois at Chicago, PGY2 Hematology/Oncology Residency at University of Illinois at Chicago

Practice Areas and Specialties: Managed Care, Hematology/Oncology

Previous Practice Areas and Positions: Clinical Pharmacy Specialist in Adult Cellular Therapy at Cleveland Clinic, Clinical Pharmacy Specialist in Adult Cellular Therapy at University Hospitals

Precepts: As needed

Involvement in Other Residency Programs: PGY2 Oncology Preceptor

❖ **Meghan Overstreet, PharmD, BCPS**



Managed Care Pharmacist I

Pharmacy School: University of Iowa

Additional Training: PGY1 Residency at Aurora Health Care Metro Inc

Practice Areas and Specialties: Pharmacy Benefit Management

Previous Practice Areas and Positions: Inpatient Clinical Pharmacist II at Aurora Sinai Medical Center

Precepts: Continuing Pharmacy Education (CPE) Presentation

❖ **Jesse Schaetzel, PharmD, BCACP**



Manager of Pharmacy, Population Health

Pharmacy School: University of Wisconsin – Madison

Practice Areas and Specialties: Pharmacy Benefit Management

Previous Practice Areas and Positions: Pharmacy Coordinator, Population Health

Precepts: Pharmacy Administration

❖ **Lena Kwan, PharmD, CSP**



Managed Care Pharmacist I

Pharmacy School: Midwestern University

Practice Areas and Specialties: Managed Care

Previous Practice Areas and Positions: Managed Care Clinical Pharmacist at Mercyhealth – MercyCare Health Plans

Precepts: Orientation/Training, Year Long Project (YLP), Pharmacy Partnerships and Innovation

❖ **Marisa Goninen, PharmD, BCACP**



Manager of Pharmacy, Population Health

Pharmacy School: University of Wisconsin – Madison

Additional Training: PGY1 Community-Based Pharmacy Residency at Aurora Specialty Pharmacy

Practice Areas and Specialties: Population Health

Previous Practice Areas and Positions: Clinical Pharmacy in Population Health, Pharmacy Coordinator in Population Health

Precepts: Pharmacy Administration

❖ **Kristina Teso, PharmD, BCPS, BCOP**



Pharmacy Coordinator, Managed Care Pharmacy Team

Pharmacy School: Purdue University

Practice Areas and Specialties: Managed Care, Hematology/Oncology, Drug Policy

Previous Practice Areas and Positions: Clinical Oncology Specialty Pharmacist at Ascension Reiman Cancer Center, Ambulatory Clinical Oncology Pharmacist at Froedtert and Medical College of Wisconsin Clinical Cancer Center, Inpatient Pharmacist at Aurora St. Luke's Medical Center

Precepts: Pharmacy Services, Pharmacy Partnerships and Innovation

Involvement in Other Residency Programs: PGY2 Oncology Preceptor

❖ **Connor Luczak, PharmD, BCPS**



Managed Care Pharmacist I

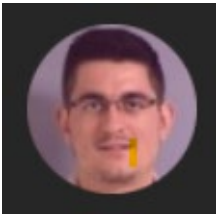
Pharmacy School: University of Michigan

Additional Training: PGY1 Managed Care Residency at University of Michigan, PGY2 Population Health Management and Data Analytics Residency at Veterans Health Administration

Practice Areas and Specialties: Managed Care, Pharmacy Benefit Management

Precepts: Pharmacy Benefit Management (PBM)

❖ **Andrew Schilli, CPhT, MBA**



Pharmacy Population Health Analyst

Practice Areas and Specialties: Data Analytics

Previous Practice Areas and Positions: Pharmacy Technician, Population Health

Precepts: Pharmacy Analytics

❖ **Amy Yang, CPhT**



Pharmacy Population Health Analyst

Practice Areas and Specialties: Data Analytics

Previous Practice Areas and Positions: Pharmacy Technician, Population Health

Precepts: Pharmacy Analytics