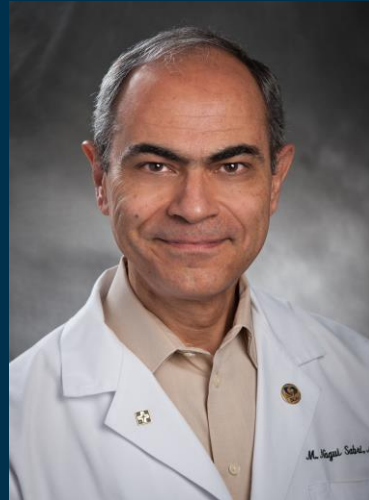


**Advocate Health Care
Lutheran General Hospital
*Cardiovascular Disease Fellowship***

Meet the Faculty

Nagui Sabri, MD



Program Director

Nishant Patel, MD



**Associate Program Director
Interventional Cardiology**

Philip Aagaard, MD



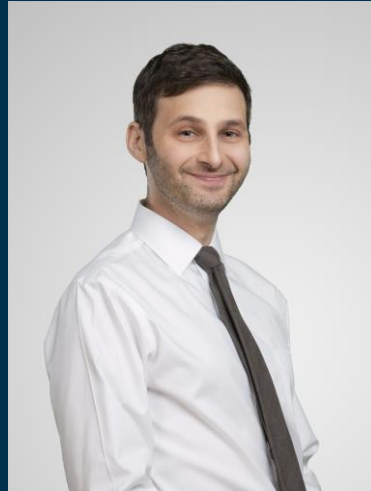
Electrophysiology

Alan Brown, MD



**Interventional Cardiology
Lipidology**

David Cohen, MD



Interventional Cardiology

Adib Chaus, MD



Interventional Cardiology
Structural Cardiology

Samuel Goldstein, MD



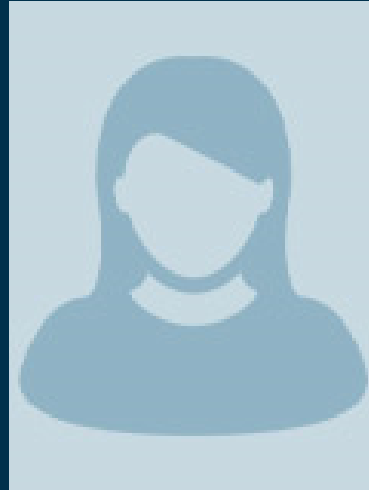
Non-Invasive Cardiology

Shoeb Hussain, MD



Core Faculty
Director, Cardiac Intensive Cardiac Unit

Yvonne Kaptein, MD



Electrophysiology

Marianna Krive, DO



Cardio-Oncology

Frank Lutrin, MD



Cardiothoracic Surgery

Katie Mikrut, MD



Core Faculty
Director, Cardiac Imaging
Director, Heart Station
Lead, Cardio OB initiative

Parag Patel, MD



Interventional Cardiology

Rajaram Poludasu, MD



Director, Nuclear Cardiology

Neal Sawlani, MD



Division Director
Director-Structural Heart

Nicholas Serafini, MD



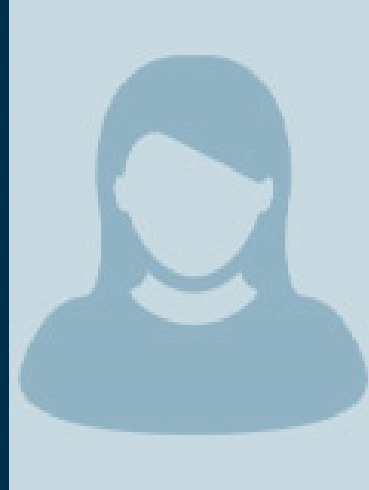
**Electrophysiology
Director, EP Lab**

Ibrahim Shaik, MD



Interventional Cardiology

Brody Slostad, MD



Cardiac Imaging